

## DIAGNOSTIC CLARITY → TESTING FOR YOU AND YOUR FAMILY

Elective Testing  
for SARS-CoV-2

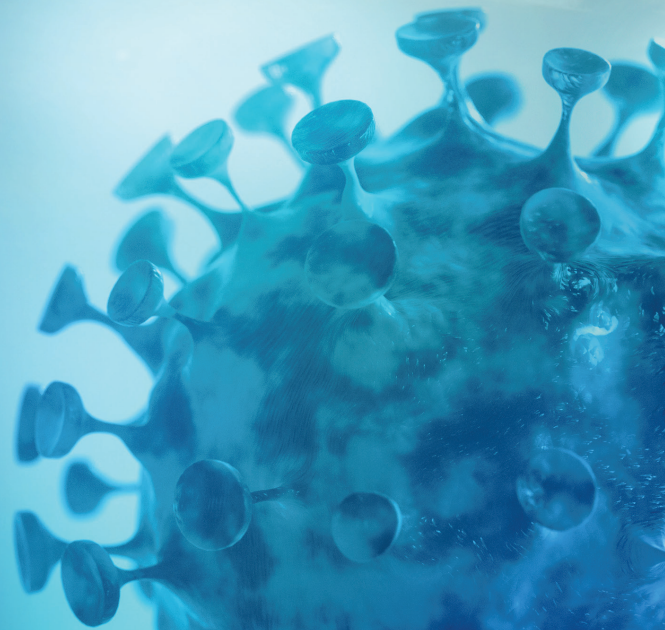
For your safety and that of your family and those around you, we offer the following clinical tools:

**1** How to make sure that you **are not contagious**

 > swab (PCR) test

**2** How to find out if you **have had SARS-CoV-2 exposure**

 > blood test



# DIAGNOSTIC CLARITY FOR TRAVELLING

## → TESTING FOR YOU AND YOUR FAMILY

### 1 HOW TO MAKE SURE I AM NOT CONTAGIOUS

#### > swab test

The RT-PCR method tests you for existing SARS-CoV-2 infection. It is the most comprehensive approach for detecting contagious individuals by molecular biology technology.

- ✓ **Based on a nose/mouth swab**, RT-PCR searches for the virus' RNA. It is the laboratory analysis of choice, as it is the most sensitive test for this purpose – even in absence of symptoms.

**Preventive measures** and continuous monitoring by clinical and diagnostic methods are equally important factors in staying safe.

### 2 HOW TO FIND OUT IF I HAVE HAD SARS-CoV-2 EXPOSURE

#### > blood test

The serological blood test for antibodies identifies if **you had contracted SARS-CoV-2 in the past**.

- ✓ Antibodies, especially IgG antibodies, are **detectable in most patients from the second week** after the onset of symptoms as an indication of previous infection.

We recommend our CE-IVD-certified serological tests of the **latest generation**.

#### **i** IgG and total antibody tests

are equally effective in confirming previous SARS-CoV-2 infection.

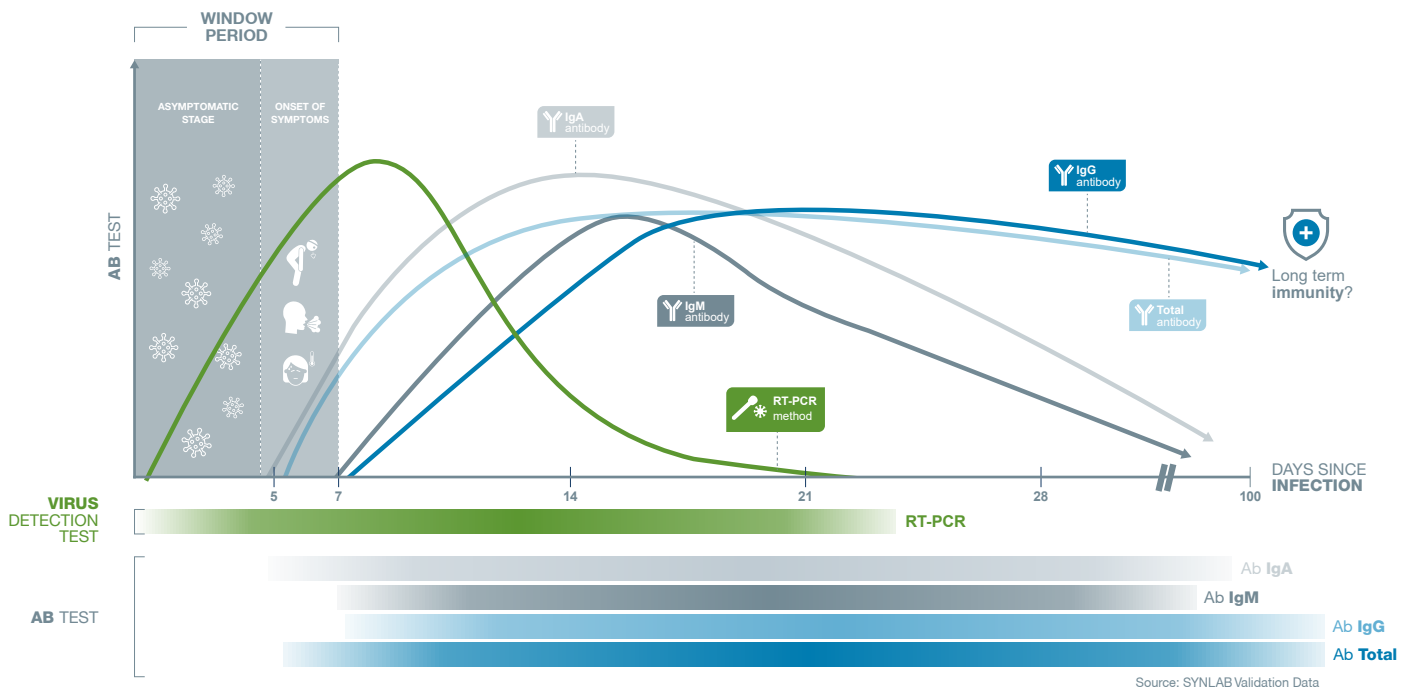
#### **i** Serological antibody tests

are not intended to detect a current infection. At present, they cannot provide certainty of immunity.



## Why are there two different methods for testing?

**RT-PCR method** can detect infection even **before the symptoms occur**, while the **serological Antibody tests** (laboratory tests) can **indicate a prior contact with the novel coronavirus** by measuring IgM or IgA and IgG antibodies in the blood after the onset of symptoms.



**SYNLAB TEST RESULTS** facilitate your travelling. You get your results in a carry-on folder, which you can easily take with you anywhere you wish.

Nonetheless, we always recommend that you check the current situation and restrictions in the countries you are travelling to.





**SYNLAB INTERNATIONAL GMBH**

Moosacher Strasse 88

80809 Munich

Germany

Tel. +49 89 307602-0

Fax +49 89 307602-190

[www.synlab.com](http://www.synlab.com)

© 2020 SYNLAB International GmbH  
No liability for errors, mistakes and incorrect  
price data. Changes reserved. All texts, images  
and contents are under copyright of SYNLAB  
International GmbH.

As of 06/2020